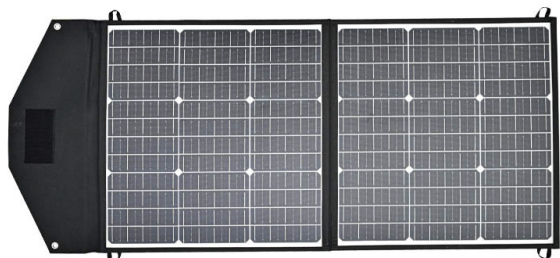


SPC-TF-M-2x55W

Portable solar charger (SPC Series)



— Product details —

Electrical Characteristics

Maximum power(Pmax)	2x55W
Open-circuit voltage(Voc)	23.36V
Voltage at Pmax(Vmp)	19.80V
Short-circuit current(Isc)	5.97A
Current at Pmax(Imp)	5.64A
Cells Efficiency(%)	22.60%
The maximum system voltage	100VDC(IEC)
Power temperature coefficient	-0.43%/°C
Voltage temperature coefficient	-0.34%/°C
Current temperature coefficient	0.05%/°C
Output power tolerance	±3%
Operating Temperature	-10~60°C

Specifications

Solar cell brand	Mono
Unfold size	1305*565*4mm
Folded size	565*550*15mm
Weight	3.48kg
Waterproof junction box	IPX65
Peak output	18V/5.6A
Warranty	1 year and service life 5 years

Module Diagram

